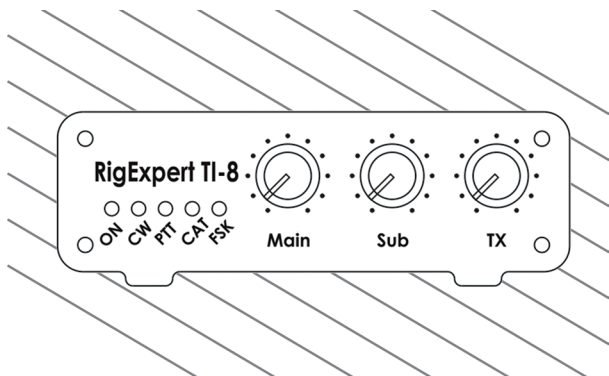


# TI-8

USB Transceiver  
Interface

RigExpert®



Software Setup  
Examples



# Table of contents

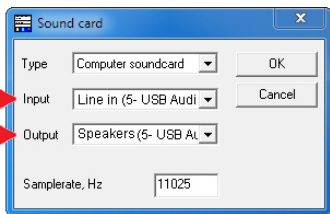
<b>DigiPan</b>	4
Audio configuration	4
PTT configuration	4
<b>MixW</b>	6
Audio configuration	6
CAT configuration	7
PTT configuration	8
FSK mode	8
AFSK mode	10
<b>MMTTY</b>	11
Audio configuration	11
PTT configuration	11
FSK mode	12
AFSK mode	13
<b>MMSSTY</b>	15
Audio configuration	15
PTT configuration	15
<b>MMVARI</b>	17
Audio configuration	17
PTT configuration	17
<b>Fldigi</b>	19
Audio configuration	19
PTT configuration	19
CAT configuration	20
<b>Ham Radio Deluxe</b>	21
CAT configuration	21
Audio configuration	21
PTT configuration	22
CW configuration	22
FSK mode	23
AFSK mode	23
<b>WinTest</b>	24
CAT configuration	24
PTT/CW configuration	25
WINKEY configuration	25
<b>WSJT-X</b>	27
Audio configuration	27
CAT configuration	27
PTT configuration	28

# DigiPan version 2.0

## Audio configuration

Go to Configure – Sound card menu.

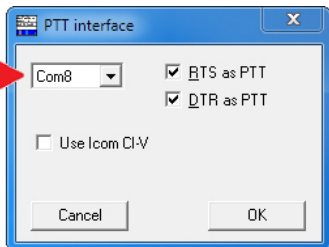
Select USB Audio CODEC as both Input and Output and press OK to apply new settings.



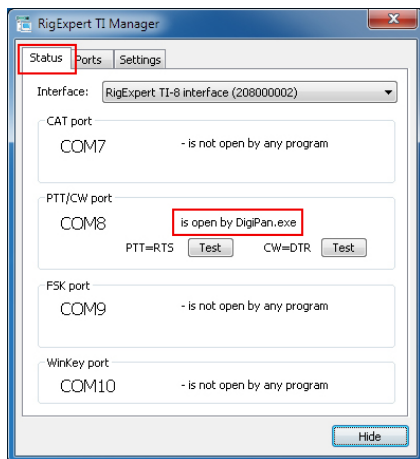
## PTT configuration

Go to Configure – Serial port menu to set up the PTT output.

Select a serial port number which should be used for the PTT output (COM8 in this example) and press OK to continue.



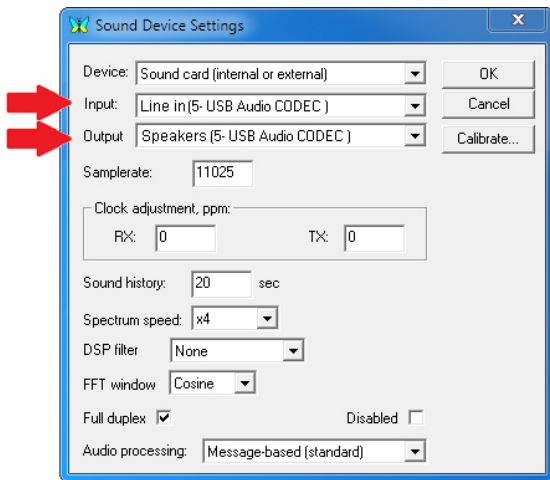
You may open the Status tab of the TI Manager program to check if the serial port was configured successfully.



# MixW version 2.20

## Audio configuration

Install and run MixW. Configure personal data (such as callsign and name), then go to Configure – Sound device settings menu.

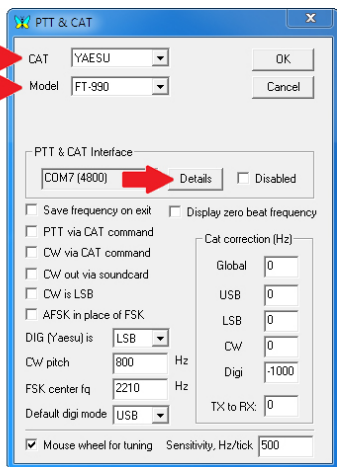


Select USB Audio CODEC as both Input and Output, then check other settings and finally press OK to apply new settings.

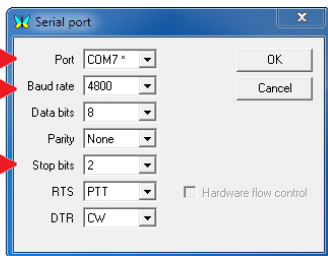
## CAT configuration

Go to Configure – TRCVR CAT/PTT menu.

Select your transceiver type and model and press Details.



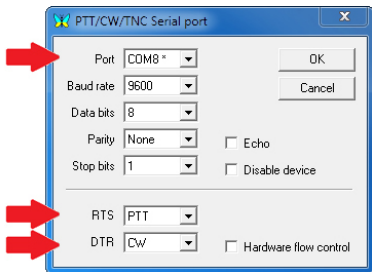
In the Serial port window, select a serial port number for the CAT system (COM7 in this example). Select a baudrate and a number of stop bits according to the user's manual of your transceiver. Press OK to close this window, and then review other settings in the PTT&CAT dialog. Finally then press OK to finish.



## PTT configuration

Go to Configure – Secondary PTT port – Port settings menu.

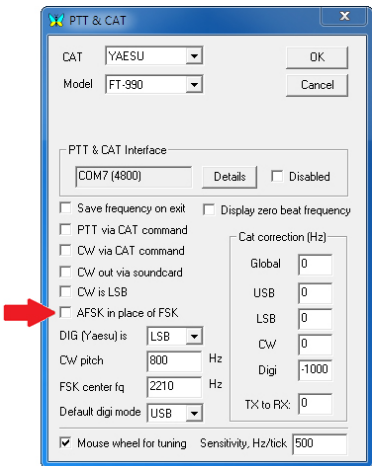
Select a serial port number which should be used for PTT and CW outputs (COM8 in this example), and make sure RTS and DTR outputs are configured for PTT and CW, correspondingly. Press OK to continue.



## FSK mode

Go to Configure – TRCVR CAT/PTT menu and make sure that the “AFSK in place of FSK” box is not checked.

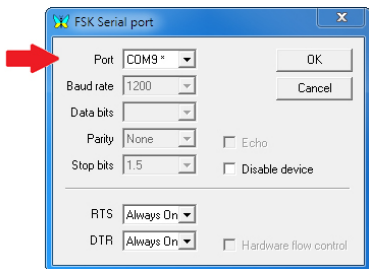
Press OK to close the dialog.



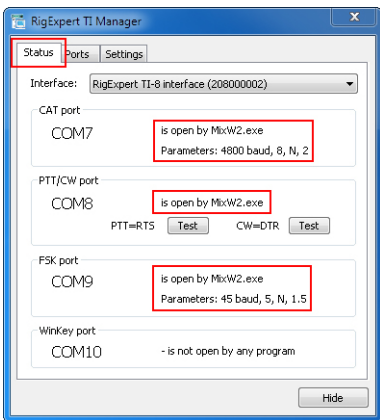


Next, go to Configure – FSK port – Port settings menu.

Select a serial port number which should be used for the FSK output (COM9 in this example) and press OK to continue.

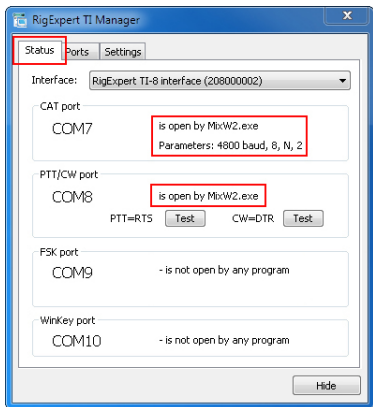
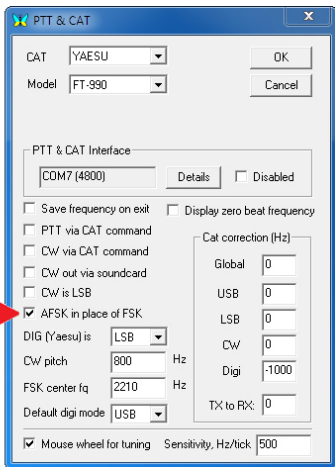


You may open the Status tab of the TI Manager program to check if the serial ports were configured successfully.



# AFSK mode

Go to Configure – TRCVR CAT/PTT menu and make sure that the “AFSK in place of FSK” box is checked.

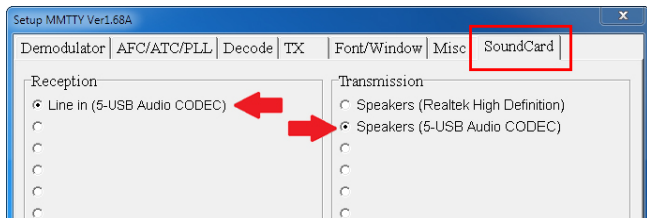


You may open the Status tab of the TI Manager program to check if the serial ports were configured successfully.

## Audio configuration

In the MMTTY software, go to Options – MMTTY Settings menu. Choose the SoundCard tab to configure audio input and output devices.

**MMTTY  
version 1.68A**

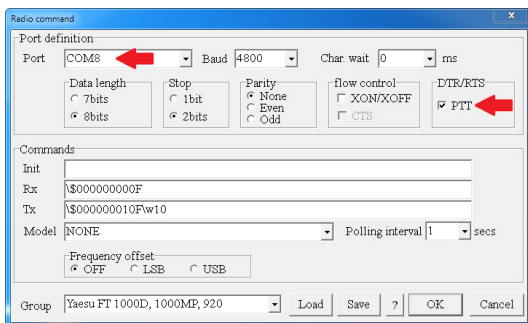


Select “USB Audio CODEC” in both Reception and Transmission areas.

## PTT configuration

Switch to the TX tab and click the “Radio command” button.

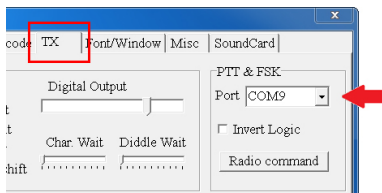
Select a serial port number which should be used for the PTT output (COM8 in this example), and make sure the PTT box is checked. Leave all other settings unchanged. Press OK to close this window.



## FSK mode

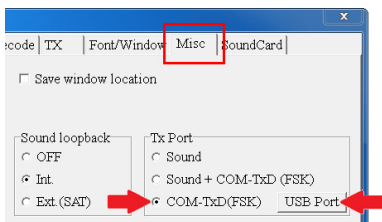
Switch to the TX tab for the FSK port configuration.

Select a serial port number which should be used for the FSK output (COM9 in this example).



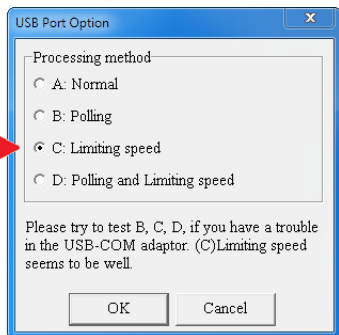
Switch to the Misc tab.

Select "COM-TxD(FSK)" in the "Tx Port" area and then press the "USB Port" button.

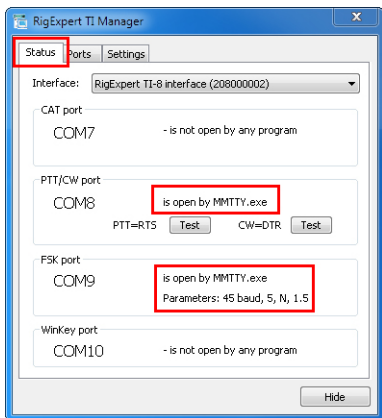


Select "C: Limiting speed" in the "USB Port Options" dialog and press OK.

Finally, press OK in the "Setup MMTTY" dialog to apply new settings.

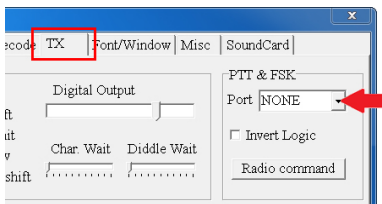


You may open the Status tab of the TI Manager program to check if the serial ports were configured successfully.

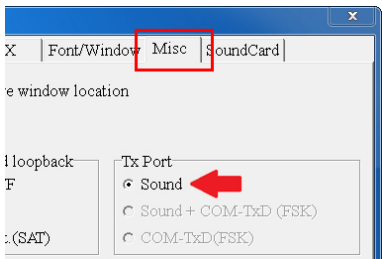


## AFSK mode

Switch to the TX tab and select NONE in the Port box.

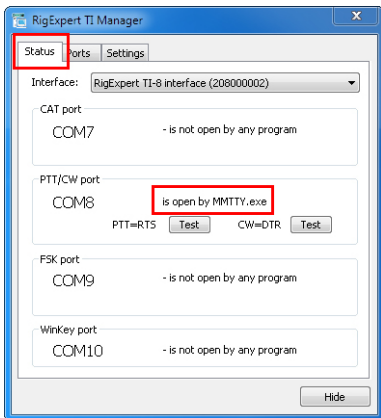


Switch to the Misc tab and select Sound in the "Tx Port" area.



Finally, press OK in the "Setup MMTTY" dialog to apply new settings.

You may open the Status tab of the TI Manager program to check if the serial ports were configured successfully.



## Audio configuration

In the MMSSTV software, go to Options – Setup MMSSTV menu. Choose the Misc tab to configure audio input and output devices.

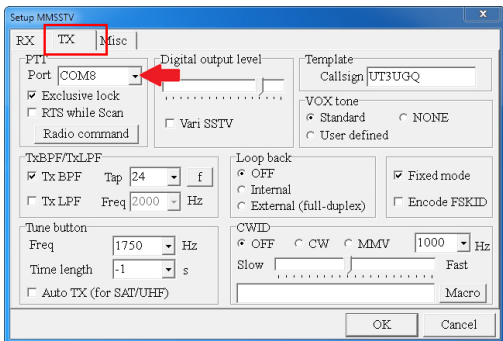
Select “USB Audio CO-DEC” in both In and Out boxes in the “Sound Card” area.



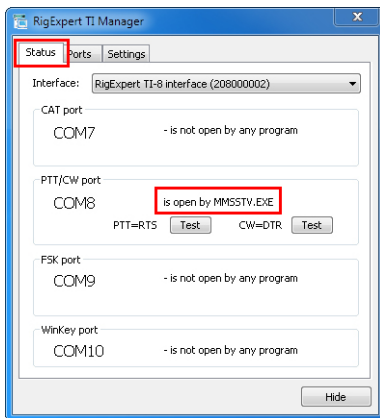
## PTT configuration

Switch to the TX tab.

Select a serial port number which should be used for the PTT output (COM8 in this example). Press OK to close this window.



You may open the Status tab of the TI Manager program to check if the serial ports were configured successfully.

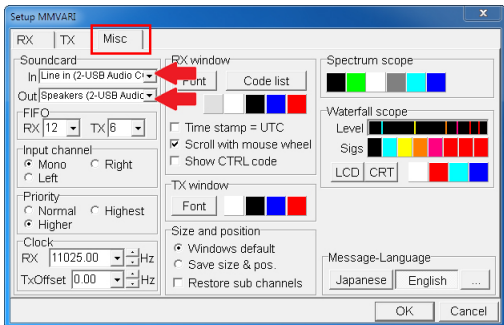




## Audio configuration

In the MMVARI software, go to Options – Setup MMVARI menu. Choose the Misc tab to configure audio input and output devices.

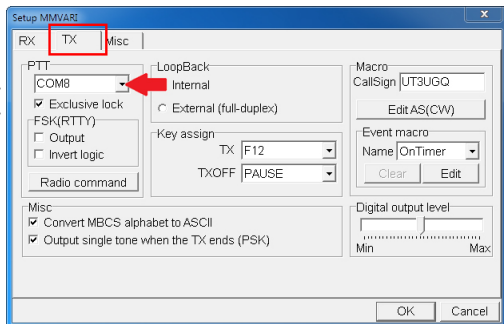
Select “USB Audio CODEC” in both In and Out boxes in the “Sound Card” area.



## PTT configuration

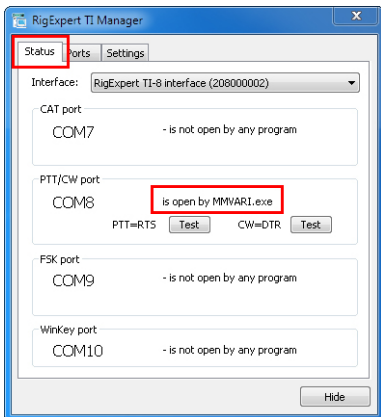
Switch to the TX tab.

Select a serial port number which should be used for the PTT output (COM8 in this example). Press OK to close this window.



MMVARI  
version 0.45A

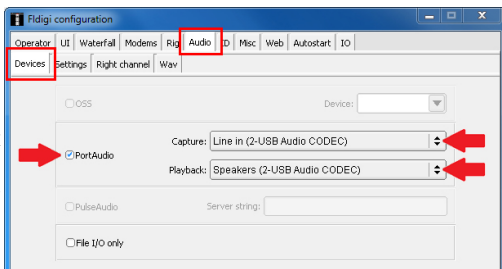
You may open the Status tab of the TI Manager program to check if the serial ports were configured successfully.



## Audio configuration

In the Fldigi software, go to Configure – Sound Card menu. Choose the Audio tab and then choose Devices tab below.

Check the PortAudio box and then select “USB Audio CODEC” in both Capture and Playback boxes.

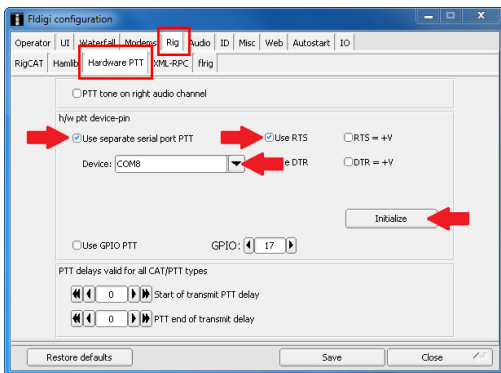


Fldigi  
version 3.23.09

## PTT configuration

Switch to the Rig tab and then select the Hardware PTT tab below.

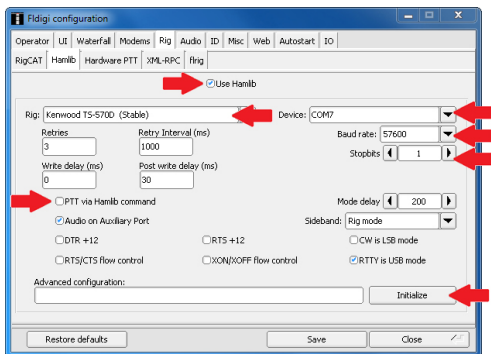
Check the “Use separate serial port PTT” and then select a serial port number which should be used for the PTT output (COM8 in this example). Also check the “Use RTS” port box and press Initialize to open the serial port. Do not forget to press the Save button to save your settings.



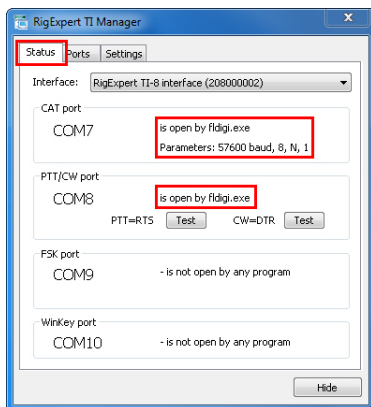
# CAT configuration

Switch to the Hamlib tab.

First, check the “Use Hamlib” box. Next, choose your transceiver model and uncheck the “PTT via Hamlib command” box. Select or enter a serial port number for the CAT system (COM7 in this example). Select a baudrate and a number of stop bits according to the user’s manual of your transceiver. Finally, press Initialize to open the CAT serial port and then press the Save button to save your settings.



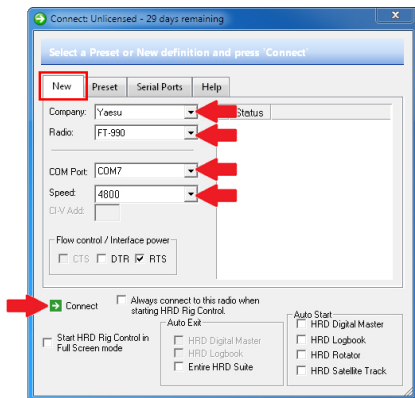
You may open the Status tab of the TI Manager program to check if the serial ports were configured successfully.



## CAT configuration

Run Ham Radio Deluxe and go to File – Connect menu (or press Ctrl–N). In the Connect dialog, select the New tab.

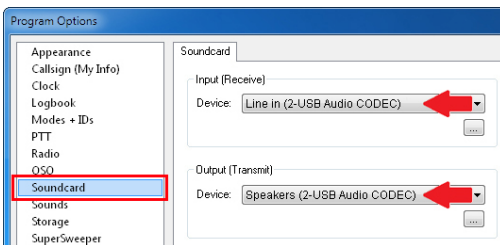
First, select your transceiver type and model. Next, select a serial port number for the CAT system (COM7 in this example) as well as baudrate according to the user’s manual of your transceiver. Finally, press Connect to let the HRD talk to your rig.



## Audio configuration

Run the Digital Master and go to Tools – Program options menu. Select Soundcard from the list at the left.

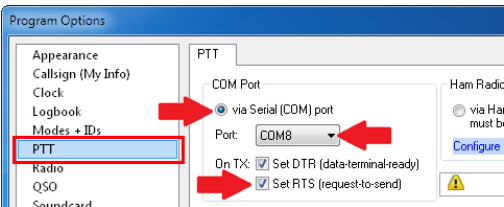
Select “USB Audio CODEC” in both Input and Output boxes.



## PTT configuration

In the Digital Master, go to Tools – Program options menu. Select PTT from the list at the left.

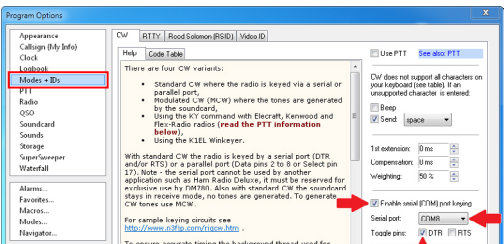
Select the “via Serial (COM) port” radio button, then select a serial port number which should be used for the PTT output (COM8 in this example). Also check the “Set RTS (request to send)” box.



## CW configuration

In the Digital Master, go to Tools – Program options menu. Select “Modes + IDs” from the list at the left.

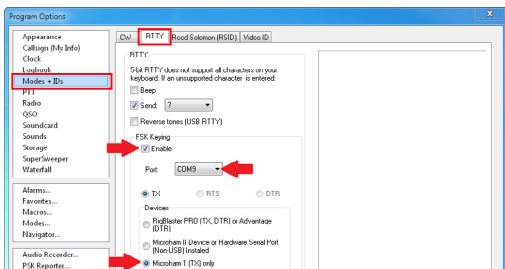
Check the “Enable serial (COM) port keying” and select a serial port number which should be used for the CW output (COM8 in this example, same as the PTT port). Also check the “Toggle pins: DTR” box.



# FSK mode

In the Digital Master, go to Tools – Program options menu. Select “Modes + IDs” from the list at the left and then choose the RTTY tab.

In the “FSK Keying” area, check the Enable box and select a serial port number which should be used for the FSK output (COM9 in this example). In addition, select the “Microham 1 (TX) only” radio button. To operate RTTY using the FSK mode, select “RTTY-45 (FSK)” mode in the main window of the Digital Master. Also check the “Set RTS (request to send)” box.



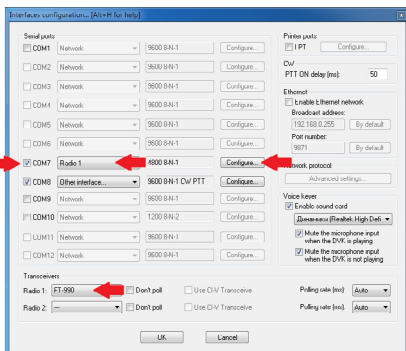
# AFSK mode

To operate RTTY using the AFSK mode, do not configure the FSK output. Just select “RTTY-45 (AFSK)”, “RTTY-50” or “RTTY-75” mode in the main window of the Digital Master.

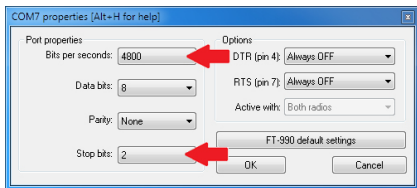
## CAT configuration

In the WinTest program, go to Options – Configure interfaces menu.

First, select your transceiver model (“Radio 1” at the bottom left of the window). Next, check the box which corresponds to the CAT port of the RigExpert TI-8 (COM7 in this example). Select “Radio 1” and then click “Configure”.



Select baudrate and the number of stop bits according to the user's manual of your transceiver. Click OK to continue.





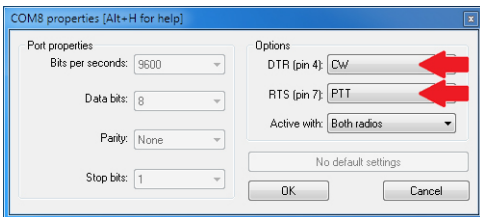
## PTT/CW configuration

In the WinTest program, go to Options – Configure interfaces menu.



Check the box which corresponds to the PTT/CW port of the RigExpert TI-8 (COM8 in this example). Select “Other interface” and then click “Configure”.

In the Options area, select CW as “DTR (pin 4)” and PTT as “RTS (pin 7)”. Click OK to continue.



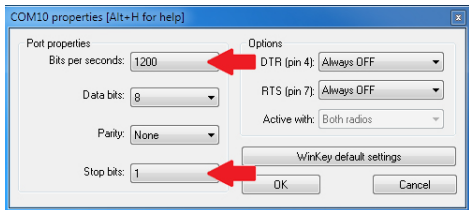
## WINKEY configuration

In the WinTest program, go to Options – Configure interfaces menu.

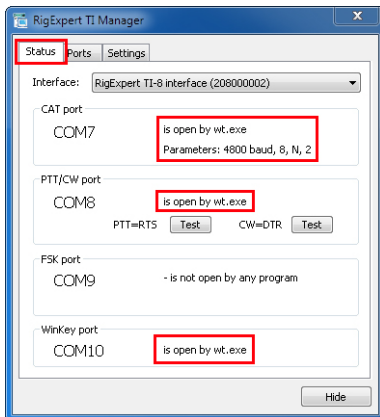


Check the box which corresponds to the WinKey port of the RigExpert TI-8 (COM10 in this example). Select “WinKey” and then click “Configure”.

Select baudrate and the number of stop bits according to the user’s manual. Click OK to continue.



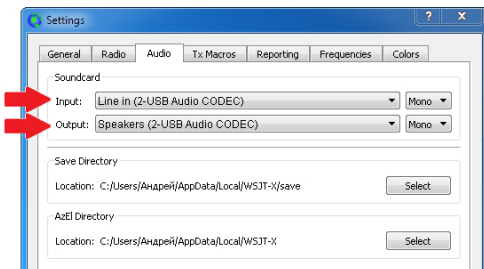
You may open the Status tab of the TI Manager program to check if the serial ports were configured successfully.



## Audio configuration

Install and run WSJT-X. Configure personal data (such as callsign and name) in File – Settings – General menu, then go to File – Settings – Audio menu.

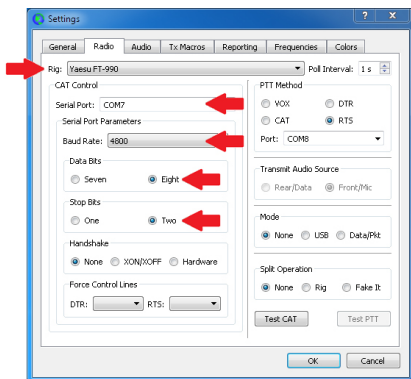
Select USB Audio CODEC as both Input and Output, then check other settings and finally press OK to apply new settings.



## CAT configuration

Go to File – Settings – Radio menu.

Select your transceiver model and a serial port number for the CAT system (COM7 in this example). Select a baudrate and a number of stop bits according to the user's manual of your transceiver. Press OK to close this window, and then review other settings in the PTT&CAT dialog. Finally then press OK to finish.

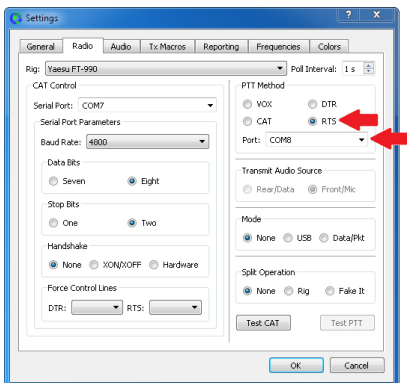


Many Icom rigs cannot be queried for split status, current VFO or split transmit frequency. Consequently you should not change the current VFO, split status or frequency using controls on the radio when using WSJT-X with an Icom radio.

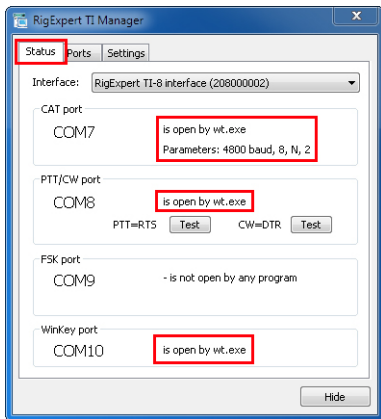
# PTT configuration

Go to File – Settings – Radio menu.

Select a serial port number which should be used for PTT and CW outputs (COM8 in this example). Press OK to continue.



You may open the Status tab of the TI Manager program to check if the serial ports were configured successfully.





<http://www.rigexpert.com>

Copyright © 2016 Rig Expert Ukraine Ltd.

“RigExpert” is a registered trademark of Rig Expert Ukraine Ltd.

Made in Ukraine



Doc. date: 03–Jun–2016